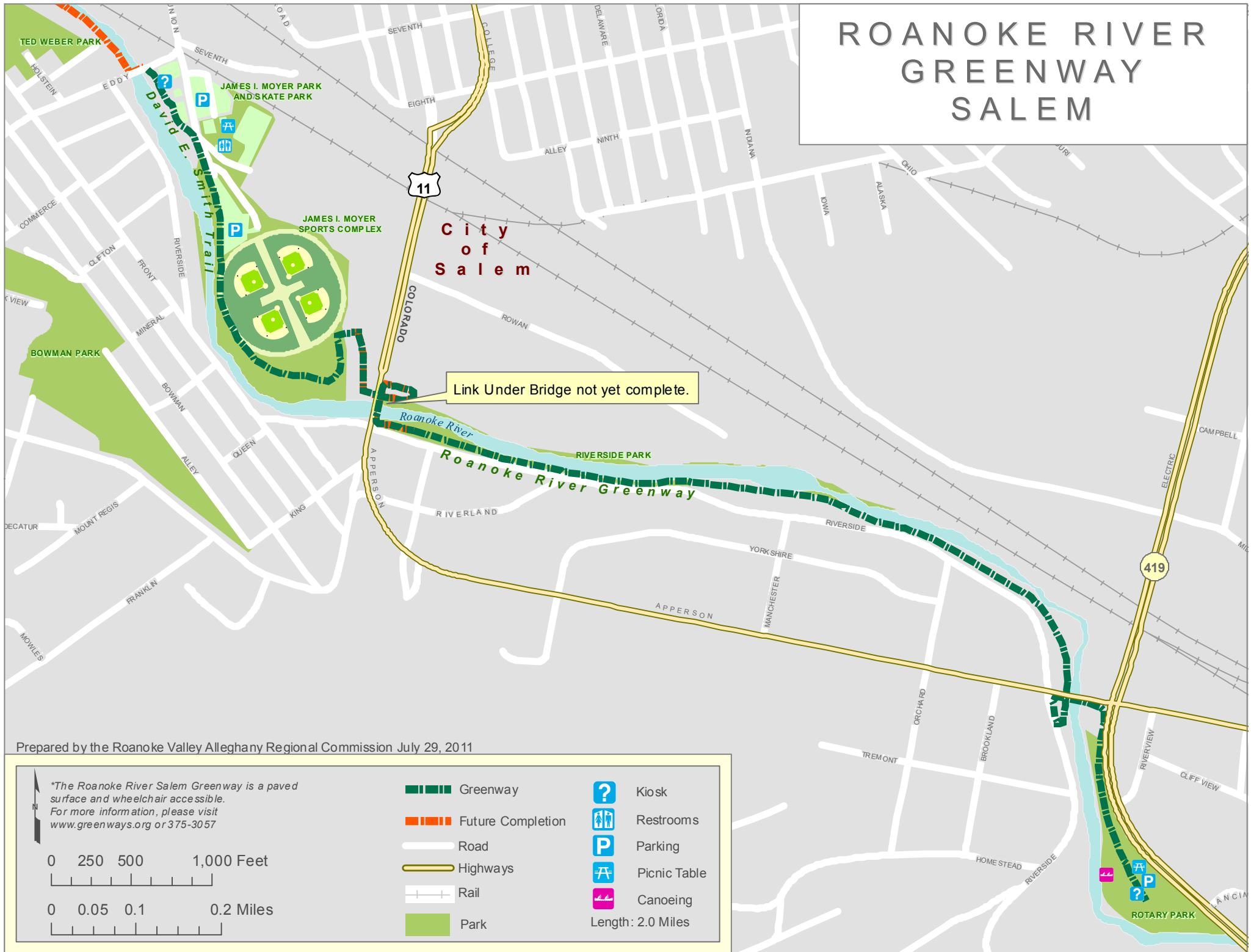


ROANOKE RIVER GREENWAY SALEM



Prepared by the Roanoke Valley Allegheny Regional Commission July 29, 2011

*The Roanoke River Salem Greenway is a paved surface and wheelchair accessible. For more information, please visit www.greenways.org or 375-3057

	Greenway		Kiosk
	Future Completion		Restrooms
	Road		Parking
	Highways		Picnic Table
	Rail		Canoeing
	Park		Length: 2.0 Miles

0 250 500 1,000 Feet

0 0.05 0.1 0.2 Miles