

TRANSPORTATION IMPROVEMENT PROGRAM (TIP)

for the

**ROANOKE VALLEY AREA
METROPOLITAN PLANNING ORGANIZATION**

Fiscal Year 2005 - 2007

(Approved August 18, 2004)

ROANOKE VALLEY AREA
MPO METROPOLITAN
P L A N N I N G
O R G A N I Z A T I O N



ROANOKE VALLEY AREA METROPOLITAN PLANNING ORGANIZATION

This document is produced as part of a continuing, comprehensive, cooperative (3-C) transportation planning process conducted by the Metropolitan Planning Organization (MPO) for the Roanoke Valley Area. As members of the Roanoke Valley Area MPO, the following agencies and local governments have participated in the development of this document.

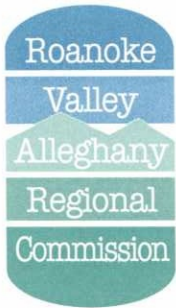
Voting Members:

| | |
|--|--|
| The Honorable Bobby Pollard | Bedford County |
| Rusty Richardson | Botetourt County |
| The Honorable Wendy Wingo | Botetourt County |
| The Honorable M. Rupert Cutler | City of Roanoke |
| Sherman Holland | City of Roanoke |
| The Honorable Richard C. Flora | Roanoke County |
| The Honorable Joe McNamara | Roanoke County |
| <i>(Alternate: The Honorable Michael Wray)</i> | |
| The Honorable Howard C. Packett | City of Salem |
| Joe Yates, Jr. | City of Salem |
| Don Davis, Chairman | Town of Vinton |
| The Honorable Bradley E. Grose | Town of Vinton |
| Richard L. Caywood | VDOT |
| <i>(Alternate: Michael Gray)</i> | |
| Chip Holdren | Greater Roanoke Transit Company |
| Jacqueline L. Shuck | Roanoke Regional Airport |
| Commission | |
| <i>(Alternate: Efren Gonzalez)</i> | |
| J. Lee E. Osborn | Intergovernmental Review Agency |
| | <i>(Roanoke Valley- Alleghany Regional Commission)</i> |

Non-Voting Members:

| | |
|------------------|---|
| Patricia Kamph | Federal Transit Administration |
| Jennifer DeBruhl | Federal Highway Administration |
| Mark Rickards | Virginia Department of Rail and Public Transportation |

This report was prepared by the Roanoke Valley Area Metropolitan Planning Organization (MPO) in cooperation with the U.S. Department of Transportation (USDOT), the Federal Highway Administration (FHWA), Federal Transit Administration (FTA), the Virginia Department of Rail and Public Transportation (VDRPT) and the Virginia Department of Transportation (VDOT). The contents of this report reflect the views of the staff of the Roanoke Valley Metropolitan Planning Organization (MPO). The MPO staff is responsible for the facts and accuracy of the data presented herein. The contents do not necessarily reflect the official views or policies of the FHWA, VDOT, or RVAMPO. This report does not constitute a standard, specification, or regulation. FHWA, FTA, VDRPT or VDOT acceptance of this report as evidence of fulfillment of the objectives of this planning study does not constitute endorsement/approval of the need for any recommended improvements nor does it constitute approval of their location and design or a commitment to fund any such improvements. Additional project level environmental impact assessments and/or studies of alternatives may be necessary.



Roanoke Valley Area
Metropolitan Planning Organization

313 Luck Avenue, SW / PO Box 2569 / Roanoke, Virginia 24010

TEL: 540.343.4417 / FAX: 540.343.4416 / www.rvarc.org / rvarc@rvarc.org

The 18th day of August, 2004

RESOLUTION

**Approving the Final Transportation Improvement Program
for Fiscal Years 2005, 2006, and 2007 for the Roanoke Urban Area**

WHEREAS, it is the position of the Roanoke Valley Area Metropolitan Planning Organization that projects proposed for improving transportation in the Roanoke urban area should be examined closely, and

WHEREAS, the *Transportation Improvement Program* has been prepared to initiate review by the Roanoke Valley Area Metropolitan Planning Organization of proposed transportation improvements for fiscal years 2005, 2006, and 2007, and

WHEREAS, inclusion of transportation projects in the *Transportation Improvement Program* is a condition of federal participation in the funding of that project, and

WHEREAS, the *Transportation Improvement Program* is required to be submitted to the Virginia Department of Transportation for inclusion in the State Transportation Improvement Program, and

WHEREAS, the Transportation Technical Committee has reviewed this document and has recommended that the Roanoke Valley Area Metropolitan Planning Organization forward the *Transportation Improvement Program* to the Virginia Department of Transportation for inclusion in the State Transportation Improvement Program;

NOW, THEREFORE BE IT RESOLVED, that the Roanoke Valley Area Metropolitan Planning Organization does hereby approve the *2005-2007 Transportation Improvement Program* (subject to additional change based on public input received).

A handwritten signature in blue ink that reads 'Don Davis'.

Don Davis
Chairman

Roanoke Valley Area Metropolitan Planning Organization (MPO)

2025 MPO Study Area Boundary

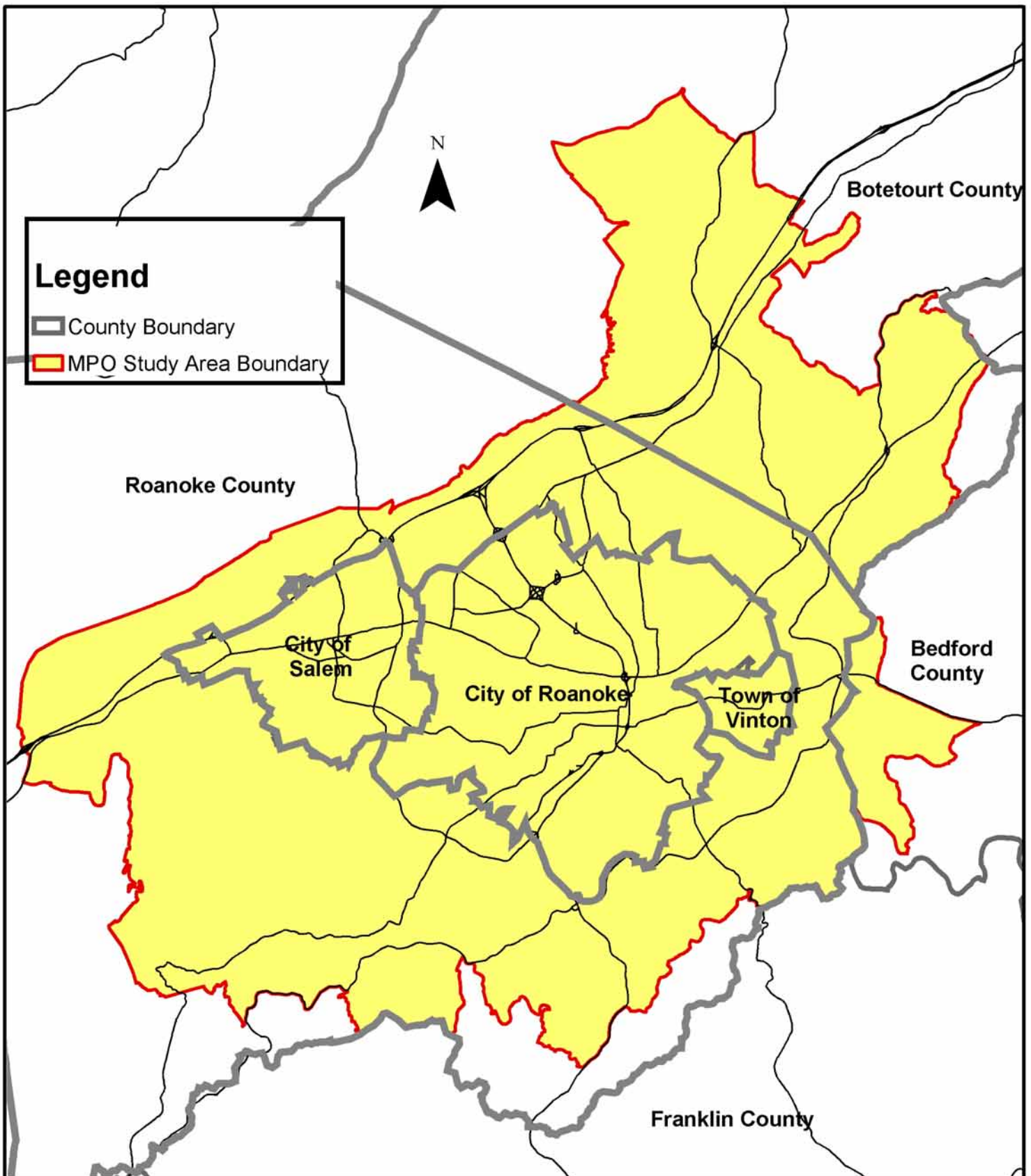


TABLE OF CONTENTS

| | |
|--|----------|
| Resolution | |
| Introduction..... | i |
| Purpose and Development | i |
| Understanding the TIP | ii |
| Definitions and Abbreviations | ii |
| Interstate System Improvements..... | 1 |
| Primary System Improvements..... | 7 |
| Urban System Improvements..... | 10 |
| Secondary System Improvements..... | 14 |
| Transportation Enhancement | 18 |
| Miscellaneous System Improvements..... | 21 |
| Greater Roanoke Transit Company | 22 |
| Unified Human Services Transportation Systems | 25 |
| Regional Airport Commission Intergovernmental Reviews..... | 28 |
| Appendix..... | 32 to 71 |

INTRODUCTION

Purpose and Development

The *Transportation Improvement Program (TIP)* for the Roanoke Urbanized Area is a comprehensive listing of transportation activities to be undertaken during the three-year interval for which it is developed. The basic purpose of the TIP is to recommend transportation projects for federal funding while combining the efforts of local jurisdictions into a regionally coordinated plan of improvements.

Projects are proposed for the TIP by local officials, transit operating officials, the Virginia Department of Transportation and any other agencies or officials responsible for transportation projects within the region. These officials, through the Roanoke Valley Area Metropolitan Planning Organization (MPO), select and schedule projects that they support for endorsement in the TIP. The Transportation Improvement Program is endorsed bi-annually by the MPO and may be modified by amendments at any time. MPO membership currently includes officials from Bedford County Botetourt County, City of Roanoke, Roanoke County, City of Salem, the Town of Vinton, the Greater Roanoke Transit Company (also known as Valley Metro), the Roanoke Regional Airport, the Virginia Department of Transportation, the Virginia Department of Rail and Public Transportation, the Federal Highway Administration, and the Federal Transit Administration.

The Comprehensive, Continuing, Cooperative (3-C) process of the MPO, provides a natural mechanism by which the plan can be carefully reviewed and updated bi-annually. Bi-annual development of this program helps to clarify future needs, allow revisions to accommodate changing conditions, and allows developing local and regional plans to be continually incorporated. The Transportation Technical Committee (TTC), a technical advisory committee to the MPO made up of representatives from local, state, and federal agencies, provides the professional expertise necessary to derive a plan, and ensure that all local and regional interests are considered. Once the program is developed, the MPO reviews and approves the program according to policies adopted by the local governments.

With few exceptions, any proposed transportation project should be included in the TIP to be considered eligible for federal funding. All phases of a project including preliminary engineering, right of way acquisitions, or construction should be documented in the TIP.

Understanding the TIP

The arrangement of the Transportation Improvement Program identifies those capital projects anticipated during fiscal years 2005, 2006, and 2007. The project tables generally include a brief description of each project and the projected funding required to complete the project. This document provides detailed project tables for highway improvements including Interstate,

Primary, Urban and Secondary system projects; safety improvements, Transportation Enhancement projects, public transportation improvements, and airport improvements.

The project tables have been derived from information provided to the MPO staff by the state and local agencies responsible for funding participation. These tables represent the best estimate of project descriptions and costs that can be made in advance of final negotiation.

The projects contained in the TIP have generally been drawn from existing plans including the Roanoke Valley Area MPO 2025 Long Range Transportation Plan. In addition, data supplied by the Roanoke Regional Airport Master Plan contribute to the development of the airport section of the TIP. Figures cited for the aviation section of the TIP originated from the preapplication for state assistance submitted by the Roanoke Regional Airport Commission. Representatives of the Airport Commission were then consulted for possible modifications to these projects.

Format of the TIP

Beginning with the FY 2005-07 Transportation Improvement Program (TIP), projects include federal funds obligated to certain phases of the project (Preliminary Engineering, Right-of-Way Acquisition and Construction). The inclusion of “obligation” data has presented a formatting dilemma. The Virginia Department of Transportation (VDOT) and the Virginia Department of Rail and Public Transit (VDRPT) each require financial information in the TIP to be presented in a specific format for state level reporting. These respective formats are not always suited to the level of public involvement necessary for a document of this nature. Consequently in this document, financial information – including obligations – is presented in a table format that is similar to previous TIPs. The formats required by VDOT and VDRPT are included in the Appendix to this document. The financial information in the FY 2005-07 TIP and the Appendix is the same. The formatting is changed in the Appendix to meet VDOT and VDRPT requirements and standards.

Definitions and Abbreviations

- *ADA* - Americans with Disabilities Act
- *Allocation* - An administrative distribution of funds set apart or designated for a special purpose.
- *Apportionment* - A law that refers to a statutorily prescribed division or assignment of funds. An apportionment is based on prescribed formulas in the law and consists of dividing authorized obligation authority for a specific program.
- *BH* - Bridge Rehabilitation Funds
- *BR* - Bridge Replacement Funds
- *BROS* - Bridge (off-system, not on the federal-aid system)

- *DEMO* - Demonstration
- *Earmarked* - To reserve or set aside for a specific purpose.
- *EN* - Enhancement Funds
- *Estimated Cost (Type of Work)* - The estimated costs given in this column begin as rough estimates usually based on historical data for the area. As work progresses, a better cost estimate can be developed. The estimated costs are updated at critical stages such as the time of the final field inspections, when plans are more defined and estimates can be relied upon to closely compare with the final project costs.

To the far left of the *Type of Work/Estimated Cost* column box the letters PE, RW, CN and Total appear with the cost estimates to their right.

⇒ PE - This stands for preliminary engineering. In this phase a preliminary field survey, utility location, environmental/historical studies, road design alternatives, drawings, final field inspections and public hearings will be done. This process can take a few months to several years to complete. A time line showing how long this phase will last for this project can be found on this row in the *Actual Allocation* and *Projected Allocation* columns.

⇒ RW - This stands for right of way. This is the portion of the project in which negotiations with property owners take place, payments are made and arrangements with utility companies are finalized, to obtain the land necessary for the project. As with the PE portion, the cost estimates are to the right, followed by the time line for the work in this part of the project. Right of way work will not begin until most of the preliminary engineering steps are complete.

⇒ CN - This stands for construction. In this phase the project is advertised to prospective contractors for bids. Once the bids are opened and a contract awarded, construction can begin. The cost estimate and time line are shown to the right.

⇒ Total - This is the total of all cost estimates and should represent the final estimated cost of the project.

- *F* - Consolidated Primary Funds
- *FAA* - Federal Aviation Administration
- *FTA* - Federal Transit Administration
- *GA* - General Aviation

- *HES* - Hazard Elimination
- *HPD* - High Priority (Demonstration) Projects
- *I* - Interstate Funds
- *ID* - Interstate Discretionary
- *IM* - Interstate Maintenance Funds
- *M* - Urbanized Funds
- *NHS* - National Highway System Funds
- *PAPI* - Precision Approach Path Indicator
- *PPMS* - Project Planning Management System (VDOT Tracking System Number)
- *RPZ* - Runway Protection Zone
- *RRP* - Rail Highway Protective Devices Funds
- *RRS* - Rail Highway Grade Separation Funds
- *S* - State Funds
- *STP* - Surface Transportation Program Funds
- *UST* - Underground Storage Tank
- [] - Signifies a Very Preliminary Estimate of Cost

| INTERSTATE SYSTEM IMPROVEMENTS | | | | | | | | | | | | |
|---|---|-------------------|--|--------|-------------------------|----------------------|------|------|-------------------------|----------------------|-------|------|
| Fiscal Years 2005-2007 | | | | | | | | | | | | |
| (Funding Amounts in Thousands of Dollars) | | | | | | | | | | | | |
| UPC # Project | Description and Other Remarks | Funding Source | Type of Work/Estimated Cost of Project | | Previous Allocations | Required Allocations | | | Previous Obligations | Required Obligations | | |
| | | | | | | 2005 | 2006 | 2007 | | 2005 | 2006 | 2007 |
| 53094 Rte 81 – Widen from 4 to 8 lanes Roanoke County | From 0.20 miles North of Goodwin Avenue (Route 635) MP 138.6 to 0.75 miles North of Thompson Memorial Drive (Route 311) MP 140.9 PE up to Public Hearing only Map #5 | NH | PE | 9,537 | | | | | 3,205 | 1,908 | | |
| | | | RW | | | | | | | | | |
| | | | CN | | | | | | | | | |
| | | | Total | 9,537 | 5,590 | 0 | 0 | 0 | 3,205 | 1,908 | 0 | |
| 53095 Rte 81 – Widen from 4 to 8 lanes Roanoke County | From 0.75 miles North of Thompson Memorial Drive (Route 311) MP 140 to .786 miles South of Interstate Route 581 MP 143.1 PE up to Public Hearing Only Map #6 | NH | PE | 9,657 | | | | | 3,358 | 1,663 | 1,769 | |
| | | | RW | | | | | | | | | |
| | | | CN | | | | | | | | | |
| | | | Total | 9,657 | 5,570 | 0 | 0 | 0 | 3,358 | 1,663 | 1,769 | |
| 53096 Rte 81 – Widen from 4 to 8 lanes Roanoke County | From 0.786 miles South of Interstate Route 581 MP 143.1 to 0.881 miles North of Interstate Route 581 MP 144.5 PE up to Public Hearing Only Map #7 | NH | PE | 12,838 | | | | | 3,259 | 2,683 | | |
| | | | RW | | | | | | | | | |
| | | | CN | | | | | | | | | |
| | | | Total | 12,838 | 6,613 | 0 | 0 | 0 | 3,259 | 2,683 | 0 | |
| 53097 Rte 81 – Widen from 4 to 8 lanes Boutetourt County | From 0.28 Miles South of Route 648 Mp 147.45 to 0.79 miles North of Route 779 E 220 MP 152.4 PE to Public Hearing Only Map #8 | NH/IM | PE | 25,127 | | | | | 6,081 | 879 | | |
| | | | RW | | | | | | 5,144 | | | |
| | | | CN | | | | | | | | | |
| | | | Total | 25,127 | 12,234 | 0 | 0 | 0 | 11,225 | 879 | 0 | |

| INTERSTATE SYSTEM IMPROVEMENTS | | | Fiscal Years 2005-2007 | | | | (Funding Amounts in Thousands of Dollars) | | | | | | |
|--|---|-------------------|--|-------|-------------------------|----------------------|---|------|-------------------------|----------------------|------|------|-----|
| UPC # Project | Description and Other Remarks | Funding Source | Type of Work/Estimated Cost of Project | | Previous Allocations | Required Allocations | | | Previous Obligations | Required Obligations | | | |
| | | | | | | 2005 | 2006 | 2007 | | 2005 | 2006 | 2007 | |
| 59173 Rte 81 – Upgrade substandard guardrail terminal on SBL | From 1.6 miles North of Route 220 (MP 151.6) to Botetourt/Rockbridge County Line (MP 173.6) SBL Map #9 | NH | PE | 8 | | | | | | | | | |
| | | | RW CN | 1,110 | | | | | | | | | |
| | | | Total | 1,117 | 1,117 | 0 | 0 | 0 | | | | | |
| T287 511 Virginia – Travel Information District Wide | Previous Funds reflect all transactions through 6-9-04 | | PE | | | | | | | | 480 | 240 | 240 |
| | | | RW CN | | | | | | | | | | |
| | | | Total | | 300 | 300 | 300 | 300 | | | 480 | 240 | 240 |
| 16841 Rumble Strips District Wide | Previous funds reflect all transactions through 6-9-04 | IM | PE | | | | | | | | 326 | | |
| | | | RW CN | | | | | | | | | | |
| | | | Total | | 362 | 0 | 0 | 0 | | | 326 | 0 | 0 |
| 70623, 72698 Salem Interstate Guardrail District Wide | Various Routes Previous funds reflect all transaction through 6-9-04 | IM | PE | | | | | | | | | | |
| | | | RW CN | | | | | | | | | | |
| | | | Total | | 0 | 0 | 250 | 250 | | | | | |

| INTERSTATE SYSTEM IMPROVEMENTS | | | Fiscal Years 2005-2007 | | | | (Funding Amounts in Thousands of Dollars) | | | | | |
|--|---|-------------------|--|--|-------------------------|----------------------|---|------|-------------------------|----------------------|------|------|
| UPC # Project | Description and Other Remarks | Funding Source | Type of Work/Estimated Cost of Project | | Previous Allocations | Required Allocations | | | Previous Obligations | Required Obligations | | |
| | | | | | | 2005 | 2006 | 2007 | | 2005 | 2006 | 2007 |
| 70624 | Various Routes | IM | PE | | | | | | | | | |
| Salem Interstate Pavement Markers | Previous funds reflect all transactions to date | | RW | | | | | | | 180 | 180 | 180 |
| District Wide | | | CN | | | | | | | | | |
| | | | Total | | 0 | 200 | 200 | 200 | | 180 | 180 | 180 |
| 70626, 72699 | Various Routes | IM | PE | | | | | | | | | |
| Salem Interstate Signals | Previous funds reflect all transactions through 6-9-04 | | RW | | | | | | | | 315 | 315 |
| District Wide | | | CN | | | | | | | | | |
| | | | Total | | 0 | 0 | 350 | 350 | | | 315 | 315 |
| 66385, 70627, 72700 | Various Routes | IM | PE | | | | | | 10 | | | |
| Salem Interstate Signs | Previous funds reflect all transactions through 6-9-04 | | RW | | | | | | | 120 | | 280 |
| District Wide | | | CN | | | | | | | | | |
| | | | Total | | 0 | 0 | 350 | 350 | 130 | | 280 | 280 |
| 70667 | Various Routes | NH | PE | | | | | | | | | |
| Salem Interstate ITS | Previous funds reflect all transactions through 6-9-04 | | RW | | | | | | | 1,600 | | |
| District Wide | | | CN | | | | | | | | | |
| | | | Total | | 2,000 | 0 | 0 | 0 | 1,600 | | | |

| INTERSTATE SYSTEM IMPROVEMENTS | | | Fiscal Years 2005-2007 | | | | (Funding Amounts in Thousands of Dollars) | | | | | |
|--|---|-------------------|--|--------|-------------------------|----------------------|---|------|-------------------------|----------------------|------|------|
| UPC # Project | Description and Other Remarks | Funding Source | Type of Work/Estimated Cost of Project | | Previous Allocations | Required Allocations | | | Previous Obligations | Required Obligations | | |
| | | | | | | 2005 | 2006 | 2007 | | 2005 | 2006 | 2007 |
| T1155, T947, 16596 Rte 73 – Proposed Corridor Location Alignment | From Roanoke to the North Carolina state line | HPD/NH | PE | 15,917 | | | | | | | | |
| | Partial PE Only - Development of FEIS through Record of Decision Map #10 | | Total | 15,917 | 12,621 | 0 | 0 | 0 | | | | |
| 56189 Rte 81 – Install ITS Signs to Communicate Road Conditions and Delays | From Exit 89 to Exit 189 | NH | PE | 115 | | | | | | | | |
| | | | RW CN | 3,396 | | | | | | | | |
| Total | | | 3,511 | 3,510 | 0 | 0 | 0 | | | | | |
| 56191 Rte 81 – Continue Highway Advisory Radio Installation | From Rockbridge/Botetourt County Line to Wythe/Pulaski County Line | NH | PE | 2 | | | | | | | | |
| | | | RW CN | 567 | | | | | | | | |
| Total | | | 569 | 600 | 0 | 0 | 0 | | | | | |
| 56193 Rte 81 - Repave Deteriorating Shoulders & Install Rumble Strips | From Wythe/Pulaski County Line to Rockbridge/Botetourt County Line | NH | PE | | | | | | | | | |
| | | | RW CN | 1,553 | | | | | | | | |
| Total | | | 1,553 | 2,039 | 0 | 0 | 0 | | | | | |

| INTERSTATE SYSTEM IMPROVEMENTS | | | Fiscal Years 2005-2007 | | | | (Funding Amounts in Thousands of Dollars) | | | | | |
|---|---|-------------------|--|-------|-------------------------|----------------------|---|-------|-------------------------|----------------------|-------|------|
| UPC # Project | Description and Other Remarks | Funding Source | Type of Work/Estimated Cost of Project | | Previous Allocations | Required Allocations | | | Previous Obligations | Required Obligations | | |
| | | | | | | 2005 | 2006 | 2007 | | 2005 | 2006 | 2007 |
| 61726 Rte 81 – Design and Install “LAN” | From Exit 140 to Exit 152 Does not include transfer of additional \$475,000.00 to UPC # 67774. Map #11 | NH | PE | | | | | | | | | |
| | | | RW | | | | | | | | | |
| | | | CN | | | | | | | | | |
| | | | Total | | 1,000 | 1,000 | 1,000 | 1,000 | | | | |
| 63706 Rte 81 – Guardrail & Terminal Installation in Median | From Milepost 134.6 to Milepost 149.35 Map #12 | NH | PE | 32 | | | | | | | | |
| | | | RW | 1,785 | | | | | | | | |
| | | | CN | | | | | | | | | |
| | | | Total | 1,817 | 1,817 | 0 | 0 | 0 | | | | |
| T1127, 67588 Rte 81 – Development of NEPA Document District Wide | PE Only | NH | PE | | | | | | | 4,912 | 2,735 | |
| | | | RW | | | | | | | | | |
| | | | CN | | | | | | | | | |
| | | | Total | | 3,170 | 2,970 | 3,419 | 0 | | 4,912 | 2,735 | |
| 68718 Rte 81 – PPTA Project Development & Management District Wide | | NH | PE | | | | | | | 560 | | |
| | | | RW | | | | | | | | | |
| | | | CN | | | | | | | | | |
| | | | Total | | 250 | 450 | 0 | 0 | | 560 | | |

| PRIMARY SYSTEM IMPROVEMENTS | | | Fiscal Years 2005-2007 | | | | (Funding Amounts in Thousands of Dollars) | | | | | |
|--|---|-------------------|--|--|-------------------------|----------------------|--|------|-------------------------|----------------------|------|------|
| UPC # Project | Description and Other Remarks | Funding Source | Type of Work/Estimated Cost of Project | | Previous Allocations | Required Allocations | | | Previous Obligations | Required Obligations | | |
| | | | | | | 2005 | 2006 | 2007 | | 2005 | 2006 | 2007 |
| 66112, 70628 Primary Districtwide Guardrail | Various Routes Previous funds reflect transactions through 6-9-04 | S | PE | | | | | | | | | |
| | | | RW | | | | | | | | | |
| | | | CN | | | | | | | | | |
| | | | Total | | 0 | 0 | 750 | 750 | | | | |
| 61427, 70629, 72701 Primary Districtwide Pavement Markers | Various Routes Previous funds reflect transactions through 6-9-04 | S | PE | | | | | | | | | |
| | | | RW | | | | | | | | | |
| | | | CN | | | | | | | | | |
| | | | Total | | 0 | 0 | 75 | 75 | | | | |
| 65777, 68798, 68799, 69134, 69156, 70630, 71062 Primary Districtwide Signals | Various Routes Previous funds reflect transactions through 6-9-04 | S | PE | | | | | | | | | |
| | | | RW | | | | | | | | | |
| | | | CN | | | | | | | | | |
| | | | Total | | 0 | 504 | 1,005 | 937 | | | | |
| 66117, 70631, 71166, 71972 Primary Districtwide Signs | Various Routes Previous funds reflect transactions through 6-9-04 | S | PE | | | | | | | | | |
| | | | RW | | | | | | | | | |
| | | | CN | | | | | | | | | |
| | | | Total | | 0 | 0 | 300 | 300 | | | | |

| URBAN SYSTEM IMPROVEMENTS | | | Fiscal Years 2005-2007 | | | | (Funding Amounts in Thousands of Dollars) | | | | | |
|--|--|-------------------|--|-------------------------|-------------------------|----------------------|--|------|-------------------------|----------------------|------|------|
| UPC # Project | Description and Other Remarks | Funding Source | Type of Work/Estimated Cost of Project | | Previous Allocations | Required Allocations | | | Previous Obligations | Required Obligations | | |
| | | | | | | 2005 | 2006 | 2007 | | 2005 | 2006 | 2007 |
| 709 Tenth Street – Reconstruction City of Roanoke | From Gilmer Avenue to 0.042 miles North of Andrews Road (Staunton Avenue) Map #15 | S | PE RW CN | 1,688 1,412 4,587 | | | | | | | | |
| | | | Total | 7,687 | 7,687 | 0 | 0 | 0 | | | | |
| 8753 Rte 460 (East Main Street) City of Salem | From intersection of Lynchburg Turnpike to 0.05 miles East of Intersection with Kessler Mill Road - Reconstruction Map #16 | S | PE RW CN | 2,017 1,082 4,222 | | | | | | | | |
| | | | Total | 7,321 | 6,901 | 157 | 263 | 0 | | | | |
| 11908 10 th Street – Reconstruction City of Roanoke | From 0.042 miles North of Andrews Road to Williamson Road. Map #17 | S | PE RW CN | 527 959 3,171 | | | | | | | | |
| | | | Total | 4,657 | 4,657 | 0 | 0 | 0 | | | | |
| 11911 Hardy Road – Widen to 5 lanes Town of Vinton | From Niagara Road to ECL Vinton CN end date and deficit based on original completion date. New completion date FY 04 Map #18 | S | PE RW CN | 772 1,419 3,561 | | | | | | | | |
| | | | Total | 5,752 | 4,971 | 371 | 370 | 41 | | | | |

| URBAN SYSTEM IMPROVEMENTS | | | Fiscal Years 2005-2007 | | | | (Funding Amounts in Thousands of Dollars) | | | | | |
|---|---|-------------------|--|--------------------------|-------------------------|----------------------|--|-------|-------------------------|----------------------|------|------|
| UPC # Project | Description and Other Remarks | Funding Source | Type of Work/Estimated Cost of Project | | Previous Allocations | Required Allocations | | | Previous Obligations | Required Obligations | | |
| | | | | | | 2005 | 2006 | 2007 | | 2005 | 2006 | 2007 |
| 12532 Rte 460 – Widen to 4 lanes, curb, gutter, sidewalk and replace BR City of Salem | From 0.013 miles East of Kessler Mill Road to 0.145 miles East of Route 419 N (Electric Road) Map #19 | S | PE RW CN | 1,898 729 4,382 | | | | | | | | |
| | | | Total | 7,009 | 7,009 | 0 | 0 | 0 | | | | |
| 19029 Wonju Street Extension – 4 lanes, curb, gutter, sidewalk City of Roanoke | From Colonial Avenue to Brandon Avenue Map #20 New Construction | STP | PE RW CN | 1,604 11,890 8,225 | | | | 490 | 793 | | 9512 | |
| | | | Total | 21,719 | 20,296 | 1,424 | 0 | 0 | | 793 | | 9512 |
| 52076 Rte 11/Apperson Drive – Intersection improvements City of Salem | At Route 419/Electric Road PE only, accruing fund for RW & CN Map #21 | STP | PE RW CN | 2,465 | | | | 493 | 1,344 | 628 | | |
| | | | Total | 2,465 | 783 | 897 | 755 | 1,175 | 493 | 1,344 | 628 | 0 |
| 56531 Rte 311 – EXT Left Turn Lanes & Add RTL FR Cleveland Street City of Salem | Thompson Memorial Drive & Cleveland Avenue Map #22 | S | PE RW CN | 94 36 401 | | | | | | | | |
| | | | Total | 531 | 210 | 145 | 177 | 0 | | | | |

| URBAN SYSTEM IMPROVEMENTS | | | Fiscal Years 2005-2007 | | | | | (Funding Amounts in Thousands of Dollars) | | | | |
|--|---|-------------------|--|--------|-------------------------|----------------------|-------|--|-------------------------|----------------------|------|-------|
| UPC # Project | Description and Other Remarks | Funding Source | Type of Work/Estimated Cost of Project | | Previous Allocations | Required Allocations | | | Previous Obligations | Required Obligations | | |
| | | | | | | 2005 | 2006 | 2007 | | 2005 | 2006 | 2007 |
| 688 13 th Street and Hollins Road- 4 lane City of Roanoke | From Orange Avenue to Dale Avenue (Includes bridge over N&W RR and Lick Run) Map #23 | STP | PE | 1,910 | | | | | | 1,356 | 350 | 5,400 |
| | | | RW | 5,400 | | | | | | | | |
| | | | CN | 19,900 | | | | | | | | |
| | | | Total | 27,210 | 204 | 2,318 | 3,406 | 4,209 | 0 | 1,356 | 350 | 5,400 |
| 71725 10 th Street – Construct 2 stage crossing with warning devices City of Roanoke | From Lick Run Creek to 170 feet South of Syracuse Avenue Bicycle/Pedestrian Improvement Map #24 | STP | PE | 5 | | | | | | 5 | | 70 |
| | | | RW | 70 | | | | | | | | |
| | | | CN | | | | | | | | | |
| | | | Total | 75 | 0 | 75 | 0 | 0 | | 5 | | 70 |
| 71740 City of Roanoke – Signal Improvements and ITS | City Administered Project | STP | PE | 143 | | | | | | 143 | | 957 |
| | | | RW | | | | | | | | | |
| | | | CN | 957 | | | | | | | | |
| | | | Total | 1,100 | 0 | 543 | 316 | 241 | | 143 | 957 | |
| 71741 Riverland Road City of Roanoke | Intersection Improvement at Bennington Street City Administered Project Map #24A | | PE | 120 | 0 | | | | | 120 | | |
| | | | RW | 100 | | | | | | | | |
| | | | CN | 800 | | | | | | | | |
| | | | Total | 1020 | | 220 | 800 | | | 120 | | |

| SECONDARY SYSTEM IMPROVEMENTS | | | Fiscal Years 2005-2007 | | | | (Funding Amounts in Thousands of Dollars) | | | | | |
|---|--|-------------------|--|---------------------|-------------------------|----------------------|--|------|-------------------------|----------------------|------|------|
| UPC # Project | Description and Other Remarks | Funding Source | Type of Work/Estimated Cost of Project | | Previous Allocations | Required Allocations | | | Previous Obligations | Required Obligations | | |
| | | | | | | 2005 | 2006 | 2007 | | 2005 | 2006 | 2007 |
| 15186 Colonial Avenue Route 720 Roanoke County | Reconstruction Map #29 | STP | PE RW CN | 950 | | | | | | | | |
| | | | Total | 950 | 0 | 0 | 0 | 0 | | | | |
| 15189 Colonial Avenue Route 720 Roanoke County | Reconstruction Map #30 | STP | PE RW CN | 441 534 2,631 | | | | | | 2,104 | 456 | 200 |
| | | | Total | 3,606 | 2,093 | 178 | 570 | 250 | 0 | 2,104 | 456 | 200 |
| 17993 Route 738 Webster Road Botetourt County | Bridge Replacement Map #31 | BROS | PE RW CN | 403 44 865 | | | | | | 35 | | 692 |
| | | | Total | 1,312 | 640 | 115 | 51 | 135 | 0 | 35 | 0 | 692 |
| 58280 John Richardson Road Route 743 Roanoke County | Bridge Replacement Map #32 | BROS | PE RW CN | 450 200 881 | | | | | 354 | 60 | 160 | |
| | | | Total | 1,531 | 190 | 140 | 169 | 280 | 354 | 60 | 160 | 0 |

| SECONDARY SYSTEM IMPROVEMENTS | | | Fiscal Years 2005-2007 | | | (Funding Amounts in Thousands of Dollars) | | | | | | |
|--|--|-------------------|--|---------------------|-------------------------|--|------|------|-------------------------|----------------------|------|------|
| UPC # Project | Description and Other Remarks | Funding Source | Type of Work/Estimated Cost of Project | | Previous Allocations | Required Allocations | | | Previous Obligations | Required Obligations | | |
| | | | | | | 2005 | 2006 | 2007 | | 2005 | 2006 | 2007 |
| 15194 Route 605 – Cougar Lane Botetourt County | Rebuild 2 lanes from Route 654 to 0.15 miles West of Alt 220 Map #37 | S | PE RW CN | 525 426 2,298 | 2,418 | 403 | 428 | 0 | | | | |
| | | | Total | 3,249 | | | | | | | | |
| 18719 Route 652 – Mountain Pass Road Botetourt County | Intersection Improvements at Route 658 Map #38 | S | PE RW CN | 162 128 580 | 206 | 150 | 52 | 141 | | | | |
| | | | Total | 870 | | | | | | | | |
| 60656 Route 652 – Mountain Pass Road Botetourt County | Upgrade Flashing Lights and Add Gates Note: Balance of \$14,070 to be provided by secondary system Map #38A | STP | PE RW CN | 0 0 141 | | | | | 127 | | | |
| | | | Total | 141 | 127 | | | | 127 | | | |
| 60657 Route 723 – Brickyard Road Botetourt County | Add Gates and Upgrade to Cantilever Flashing Lights Note: Balance of \$20,260 to be provided by Secondary System Map #38B | STP | PE RW CN | 0 0 203 | | | | | 182 | | | |
| | | | Total | 203 | 182 | | | | 182 | | | |

| TRANSPORTATION ENHANCEMENT (TE) | | | Fiscal Years 2005-2007 | | | | (Funding Amounts in Thousands of Dollars) | | | | | |
|--|--|-------------------|--|-----------------|-------------------------|----------------------|--|------|-------------------------|----------------------|------|------|
| UPC # Project | Description and Other Remarks | Funding Source | Type of Work/Estimated Cost of Project | | Previous Allocations | Required Allocations | | | Previous Obligations | Required Obligations | | |
| | | | | | | 2005 | 2006 | 2007 | | 2005 | 2006 | 2007 |
| City of Roanoke # 16071 | Railside Linear Park: Development of pedestrian elevated walkway between the historic Market District and the Virginia Museum of transportation in the City of Roanoke; \$300,000 originated from Transportation Enhancement Program (TEA-21) *Construction Underway | EN/ STP | PE | 333 | 300 | | | | 299 | | | |
| | | | RW | 2,021 | | | | | | | | |
| | | | Total | 2,354 EN 300 | | | | | 299 | | | |
| City of Roanoke # 18772 | Virginia Museum of Transportation: Improvements to the existing railside yard of the museum’s main facility; \$386,000 originated from Transportation Enhancement Program (TEA-21) *Construction Underway | EN/ STP | PE | 72 | 386 | | | | 41 | | | |
| | | | RW | ---- | | | | | | | | |
| | | | CN | 715 | | | | | 345 | | | |
| | | | Total | 787 EN 386 | | | | | 396 | | | |
| City of Roanoke # 52407 | Virginia Museum of Transportation: Restoration of the museum roof and extension of the canopy over the station’s railside dock; \$90,000 originated from Transportation Enhancement Program (TEA-21) | EN/ STP | PE | 5 | 90 | | | | | | | |
| | | | RW | --- | | | | | | | | |
| | | | CN | 273 | | | | | | | | |
| | | | Total | 278 EN 90 | | | | | | | | |
| City of Roanoke # 59794 | N & W Railway Passenger Station: Renovation of the historic station for use as a visitor’s center and museum; \$488,000 awarded for 2002 (\$208,000 FY 02/03 allocation; \$292,000 transferred from cancelled project) *Developing Schedule | EN/ STP | PE | 565 | 1,098 | | | | 99 | | | |
| | | | RW | 0 | | | | | | | | |
| | | | CN | 4,570 | | | | | 889 | | | |
| | | | Total | 5,135 | | | | | 988 | | | |

| TRANSPORTATION ENHANCEMENT (TE) | | | Fiscal Years 2005-2007 | | | (Funding Amounts in Thousands of Dollars) | | | | | | |
|--|--|------------------------------------|--|---------------|-------------------------|--|------|------|-------------------------|----------------------|------|------|
| UPC # Project | Description and Other Remarks | Funding Source | Type of Work/Estimated Cost of Project | | Previous Allocations | Required Allocations | | | Previous Obligations | Required Obligations | | |
| | | | | | | 2005 | 2006 | 2007 | | 2005 | 2006 | 2007 |
| Roanoke County | Blue Ridge Parkway Interpretive Center (Phase I): Construction of Interpretive Center building at location above the Roanoke River gorge; \$600,000 earmarked for Phase I in TEA-21 Legislation as a “Mandated Transportation Enhancement Project” | TEA-21 Special Appropriation | PE | 0 | | | | | | | | |
| | | | RW | 0 | | | | | | | | |
| | | | CN | 600 | | | | | | | | |
| | | | Total | 600 | 600 | | | | | | | |
| Roanoke County # 56410 | Blue Ridge Parkway Interpretive Center (Phase II): Fabrication and installation of interpretive displays and exhibits to be housed in interior of Interpretive Center building; and landscaping around the facility. | EN/ STP | PE | 116 | | | | | 21 | | | |
| | | | RW | --- | | | | | 39 | | | |
| | | | CN | 626 | | | | | | | | |
| | | | Total | 745 EN 340 | 340 | | | | 60 | | | |
| City of Salem/ City of Roanoke and Roanoke County # 56409 | Roanoke River Greenway: Construction of a 17-mile bicycle/pedestrian trail along the Roanoke River. | EN/ STP | PE | 585 | | | | | 769 | | | |
| | | | RW | | | | | | | | | |
| | | | CN | 14,610 | | | | | | | | |
| | | | Total | 15,195 | 869 | | | | 769 | | | |
| City of Roanoke # 70300 | Historic Hotel Dumas: Renovation of hotel for use as an artistic and cultural center | EN/ STP | PE | 1,072 | | | | | 4 | | | |
| | | | RW | | | | | | | | | |
| | | | CN | 2,790 | | | | | | | | |
| | | | Total | 3,862 | 150 | | | | 4 | | | |

| MISCELLANEOUS SYSTEM IMPROVEMENTS | | | | | | | | | | | | |
|---|--|-------------------|--|-----|-------------------------|----------------------|------|------|-------------------------|----------------------|------|------|
| Fiscal Years 2005-2007 | | | | | | | | | | | | |
| (Funding Amounts in Thousands of Dollars) | | | | | | | | | | | | |
| UPC # Project | Description and Other Remarks | Funding Source | Type of Work/Estimated Cost of Project | | Previous Allocations | Required Allocations | | | Previous Obligations | Required Obligations | | |
| | | | | | | 2005 | 2006 | 2007 | | 2005 | 2006 | 2007 |
| 50538 Historic Restoration | Roanoke Passenger Station | HPD | PE | 315 | | | | | 252 | | | |
| | Additional Matching Funds Required | | RW | | | | | | | | | |
| | | | CN | 310 | | | | | 248 | | | |
| | | | Total | 625 | 500 | 0 | 0 | 0 | 500 | | | |
| 52417 Motorist Assistance Unit District Wide | | S | PE | | | | | | | | | |
| | | | RW | | | | | | | | | |
| | | | CN | | | | | | | | | |
| | | | Total | | 147 | 0 | 0 | 0 | | | | |
| 70644 Blue Ridge Parkway Interpretive Center | Located at Explore Park | DEMO | PE | | | | | | | | | |
| | | | RW | | | | | | | | | |
| | | | CN | | | | | | | | | |
| | | | Total | | 600 | 0 | 0 | 0 | | | | |
| 72658 Mason Creek Greenway | 5 Mile Bicycle/Pedestrian Trail | SB | PE | | | | | | | | | |
| | Includes FY04 Federal Omnibus Bill allocation | | RW | | | | | | | | | |
| | | | CN | | | | | | | | | |
| | | | Total | | 1,243 | 0 | 0 | 0 | | | | |

Greater Roanoke Transit Company

Fiscal Year 2005

| Project | Funding Type | Description | Total | Federal | State | Local Match General Funds | Operating Revenues |
|----------------|---------------------|--|---------------------|---------------------|---------------------|--------------------------------------|-------------------------------|
| Operating | FTA 5307 | Operating Expenses | 5,879,000.00 | 1,814,392.00 | 967,730.00 | 1,399,579.00 | 1,697,299.00 |
| Demonstration | Demonstration | Route Expansion-The Smart Way | 99,370.00 | - | 64,288.00 | 3,384.00 | 31,698.00 |
| Capital | FTA 5309 | Purchase Replacement Buses (FY 04 State Match) | 98,122.00 | | 98,122.00 | | |
| Capital | STATEWIDE-STP | Preventative Maintenance | 203,750.00 | 163,000.00 | 15,485.00 | 25,265.00 | |
| Capital | STATEWIDE-STP | Support Vehicle | 35,000.00 | 28,000.00 | 2,660.00 | 4,340.00 | |
| Capital | STATEWIDE-STP | Replacement Vans - S.T.A.R. (2) | 100,000.00 | 80,000.00 | 7,600.00 | 12,400.00 | |
| Capital | STATEWIDE-STP | Building Improvements-Adm Facility | 50,008.00 | 40,006.00 | 3,801.00 | 6,201.00 | |
| Capital | STATEWIDE-STP | Shop Equipment | 20,000.00 | 16,000.00 | 1,520.00 | 2,480.00 | |
| Capital | STATEWIDE-STP | ADP Hardware | 10,000.00 | 8,000.00 | 760.00 | 1,240.00 | |
| Capital | STATEWIDE-STP | ADP Software | 5,000.00 | 4,000.00 | 380.00 | 620.00 | |
| | | Totals | 6,500,250.00 | 2,153,398.00 | 1,162,346.00 | 1,455,509.00 | 1,728,997.00 |

Greater Roanoke Transit Company

Fiscal Year 2006

| Project | Funding Type | Description | Total | Federal | State | Local Match General Funds | Operating Revenues |
|----------------|---------------------|---|---------------------|---------------------|-------------------|--------------------------------------|-------------------------------|
| Operating | FTA 5307 | Operating Expenses | 6,172,644.00 | 1,814,392.00 | 967,730.00 | 1,505,074.00 | 1,885,448.00 |
| Capital | FTA 5307/5309 | 1 Replacement Support Vehicle | 35,000.00 | 28,000.00 | 3,500.00 | 3,500.00 | |
| Capital | FTA 5307/5309 | 2 Replacement Body on Chasis Vans for S.T.A. R. | 100,000.00 | 80,000.00 | 10,000.00 | 10,000.00 | |
| Capital | FTA 5307/5309 | 2 Expansion Body on Chasis Vans for S.T.A. R. | 100,000.00 | 80,000.00 | 10,000.00 | 10,000.00 | |
| Capital | FTA 5307/5309 | Shop Equipment | 20,000.00 | 16,000.00 | 2,000.00 | 2,000.00 | |
| | | | | | | | |
| | | Totals | 6,427,644.00 | 2,018,392.00 | 993,230.00 | 1,530,574.00 | 1,885,448.00 |

Greater Roanoke Transit Company

Fiscal Year 2007

| Project | Funding Type | Description | Total | Federal | State | Local Match General Funds | Operating Revenues |
|----------------|---------------------|-------------------------------|----------------------|---------------------|---------------------|--------------------------------------|-------------------------------|
| Operating | FTA 5307 | Operating Expenses | 6,481,275.00 | 1,814,392.00 | 967,730.00 | 1,799,153.00 | 1,900,000.00 |
| Capital | FTA 5307/5309 | 18 Replacement 35' Buses | 5,400,000.00 | 4,320,000.00 | 540,000.00 | 540,000.00 | |
| Capital | FTA 5307/5309 | 1 Replacement Support Vehicle | 35,000.00 | 28,000.00 | 3,500.00 | 3,500.00 | |
| Capital | FTA 5307/5309 | Shop Equipment | 35,000.00 | 28,000.00 | 3,500.00 | 3,500.00 | |
| | | | | | | | |
| | | Totals | 11,951,275.00 | 6,190,392.00 | 1,514,730.00 | 2,346,153.00 | 1,900,000.00 |

Unified Human Services Transportation Systems, Inc.

Fiscal Year 2005

| Project | Funding Source | Description | Federal | State | Local | Other | Total |
|-------------------------------|-----------------------|--------------------|----------------|--------------|--------------|--------------|--------------|
| Operating | | FTA Section 5311 | \$100,193 | \$28,381 | \$71,812 | \$17,000 | \$217,386 |
| Capital | | | | | | | |
| Maint/Tmg/Admin/Stor Facility | | Statewide STP | \$40,000 | \$3,800 | \$6,200 | | \$50,000 |
| Communication Systems | | Statewide STP | \$256,000 | \$24,320 | \$39,680 | | \$320,000 |
| Replacement (4) Vans | | State Paratransit | | \$197,600 | \$10,400 | | \$208,000 |
| Shop Equipment | | Statewide STP | \$80,000 | \$7,600 | \$12,400 | | \$100,000 |

Unified Human Services Transportation Systems, Inc.**Fiscal Year 2006**

| Project | Funding Source | Description | Federal | State | Local | Other | Total |
|-------------------------------|-----------------------|--------------------|----------------|--------------|--------------|--------------|--------------|
| Operating | | FTA Section 5311 | \$100,193 | \$28,381 | \$71,812 | \$17,000 | \$217,386 |
| Capital | | | | | | | |
| Replacement Vans (5) | | Section 5311/5309 | \$212,000 | \$20,140 | \$32,860 | | \$265,000 |
| Maint/Tmg/Admin/Stor Facility | | Section 5311/5309 | \$40,000 | \$3,800 | \$6,200 | | \$50,000 |
| Communication Systems | | Section 5311/5309 | \$80,000 | \$12,400 | \$7,600 | | \$100,000 |
| Replacement Vans (2) | | Section 5310 | \$84,800 | \$8,056 | \$13,144 | | \$106,000 |

Unified Human Services Transportation Systems, Inc.**Fiscal Year 2007**

| Project | Funding Source | Description | Federal | State | Local | Other | Total |
|----------------------|-----------------------|--------------------|----------------|--------------|--------------|--------------|--------------|
| Operating | | FTA Section 5311 | \$100,193 | \$28,381 | \$71,812 | \$17,000 | \$217,386 |
| Capital | | | | | | | |
| Replacement (5) Vans | | Section 5311/5309 | \$212,000 | \$20,140 | \$32,860 | | \$265,000 |
| Computer Equipment | | Section 5311/5309 | \$20,000 | \$1,900 | \$3,100 | | \$25,000 |
| Replacement (2) Vans | | Section 5310 | \$84,800 | \$8,056 | \$13,144 | | \$10,600 |

INTERGOVERNMENTAL REVIEW STAFF REPORT

Notice of Intent _____

Pre-Application _____

Application X

TITLE: Roanoke Regional Airport Six Year Plan

DATE: June 14, 2004

APPLICANT: Roanoke Regional Airport Commission

REVIEWER: Mark McCaskill

Year 1 (FY 2005)

| | | | | |
|----------------|--------------|-----------------|--------|--------|
| Federal Funds: | State Funds: | Local Matching: | Other: | Total: |
|----------------|--------------|-----------------|--------|--------|

| | | | | |
|--------------------|------------------|------------------|------------|--------------------|
| <u>\$3,603,261</u> | <u>\$741,646</u> | <u>\$638,000</u> | <u>\$0</u> | <u>\$4,982,907</u> |
|--------------------|------------------|------------------|------------|--------------------|

GRANTOR AGENCY: Virginia Department of Aviation/ Federal Aviation Administration

BRIEF DESCRIPTION OF PROJECT:

This document is the Roanoke Regional Airport's Six Year Plan. The Six Year plan lists the capital improvements that are anticipated over the next six years. Year 1 (2005) represents the capital budget in this application. Years 2-6 represent the capital improvement program section of this application. Since the six year plan is updated on a yearly basis details of years 2-6 are for planning purposes and may change in future six year plans.

CRITERIA USED BY STAFF FOR APPROVAL OR DISAPPROVAL: THE PROPOSED PROJECT:

1. Is consistent with overall plans Yes X No

- 2. Will not duplicate existing efforts..... Yes No
- 3. Will promote effective use of human resources..... Yes No
- 4. Will contribute to economic and/or community development..... Yes No
- 5. Will have no significant adverse effect on the environment..... Yes No
- 6. Will likely meet the needs of the intended recipients..... Yes No

Explanation of above and/or other comments:

*ALL INFORMATION CONTAINED IN THE APPLICATION HAS BEEN SUBMITTED. ALL
ADDITIONAL INFORMATION REQUESTED HAS BEEN SUBMITTED.*

RECOMMENDATION: Staff recommends favorable comment.

Clearinghouse Control #

VA050524-00700512770

INTERGOVERNMENTAL REVIEW STAFF REPORT

Notice of Intent _____

Pre-Application X

Application _____

TITLE: Aviation Promotion and Air Service Development and Enhancement Programs Pre-application Package (Roanoke Regional Airport FY 2005)

DATE: June 17, 2004

APPLICANT: Roanoke Regional Airport Commission

REVIEWER: Mark McCaskill

| Federal Funds: | State Funds: | Local Matching: | Other: | Total: |
|----------------|-----------------|-----------------|------------|-----------------|
| <u>\$0</u> | <u>\$45,000</u> | <u>\$45,000</u> | <u>\$0</u> | <u>\$90,000</u> |

GRANTOR AGENCY: Virginia Department of Aviation

BRIEF DESCRIPTION OF PROJECT:

This project seeks to provide an increased level of customer service at the Roanoke Regional Airport by employing the following strategies and/or data sources: web based flight guides, air service consultant services, airline presentations, air service data subscriptions, radio, billboards, TV & print advertising and flight information data on MUFID and web.

CRITERIA USED BY STAFF FOR APPROVAL OR DISAPPROVAL: THE PROPOSED PROJECT:

1. Is consistent with overall plans Yes X No _____
2. Will not duplicate existing efforts..... Yes X No _____

- 3. Will promote effective use of human resources.....Yes No
- 4. Will contribute to economic and/or community development.....Yes No
- 5. Will have no significant adverse effect on the environment.....Yes No
- 6. Will likely meet the needs of the intended recipients.....Yes No

Explanation of above and/or other comments:

*ALL INFORMATION CONTAINED IN THE APPLICATION HAS BEEN SUBMITTED. ALL
ADDITIONAL INFORMATION REQUESTED HAS BEEN SUBMITTED.*

RECOMMENDATION: Staff recommends favorable comment.